

C I M E N T O®
S U R F A C E S

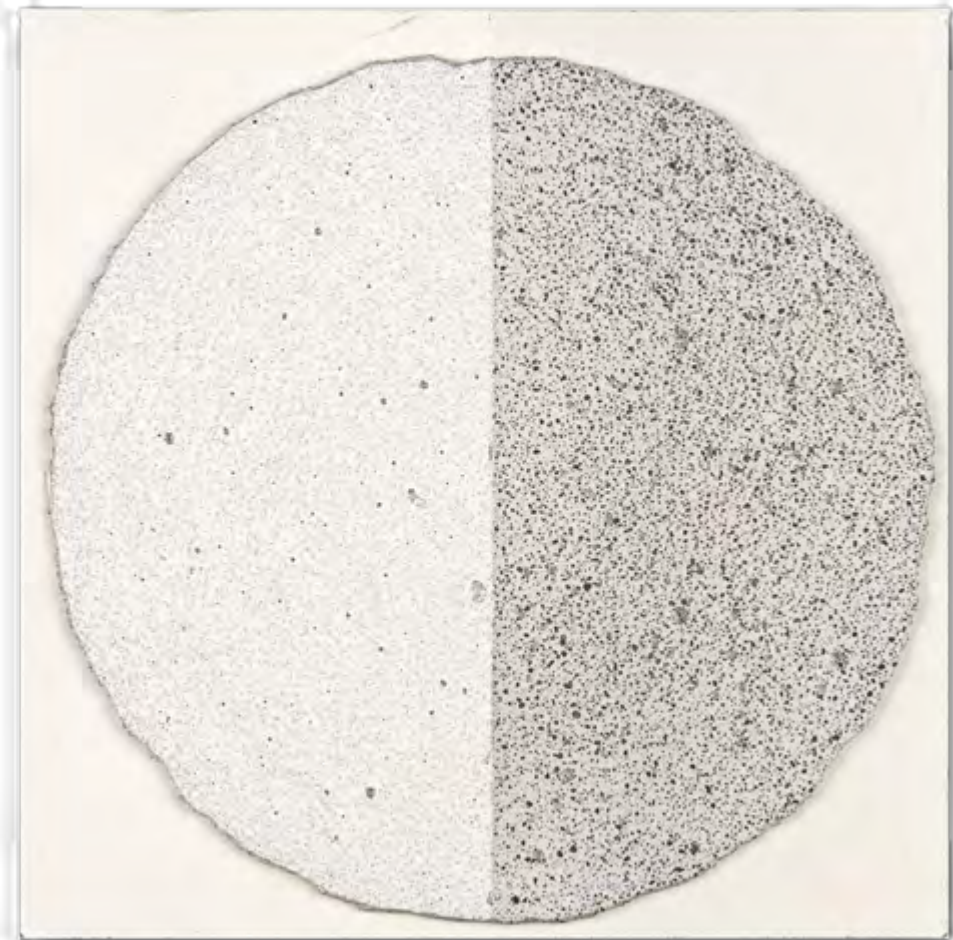
P A N E L S & W I L L

2 0 2 6



PRODUCT LIST
INDICE

CIMENTO®	7
OUR STORY	9
OUR CULTURE	10
PANELS R&D Cimento	12
WILL R&D Cimento	22
FINISHES Panels & Will	30
Liscio R&D Cimento	32
Sabbiato R&D Cimento	42
Terrazzo R&D Cimento	48
Rigato R&D Cimento	54
Griglia Patricia Urquiola	60
Mica R&D Cimento	66
Ando R&D Cimento	70
Tavolato R&D Cimento	78
Vibrato R&D Cimento	84
Vetro R&D Cimento	88
Goffrato R&D Cimento	94
Ordito 7.1 Monogramma studio	100
RESPONSIBILITY	110
DESIGNERS Cimento surfaces	120





C I M E N T O®

CIMENTO® è un composto cementizio ottenuto da una miscela di aggregati minerali e leganti, progettato per coniugare matericità e leggerezza in un equilibrio inedito. Applicabile su diversi supporti, genera superfici dall'estetica essenziale e dalla forte presenza materica, offrendo massima versatilità e semplicità di installazione. Texture profonde, cromie sofisticate e un'ampia possibilità di personalizzazione ne fanno uno strumento d'elezione per architetti e designer alla ricerca di nuove prospettive espressive e libertà progettuale.

CIMENTO® is a cement-based compound composed of a unique blend of mineral aggregates and binders, designed to achieve an exceptional balance between substance and lightness. It can be applied to a variety of surfaces, allowing for the creation of designs with a minimalist aesthetic and a prominent material presence, all while ensuring ease of installation. Featuring rich textures, elegant colours, and a wide array of customisation options, **CIMENTO®** is the perfect choice for architects and designers eager to push the boundaries of creativity and explore new expressive possibilities in their projects.



OUR STORY

Il progetto iniziale prende forma nel 2010 con il primo prodotto: un pannello di legno rivestito da una malta cementizia. Una prima esplorazione delle potenzialità estetiche e funzionali del materiale, avviando un percorso di ricerca e sviluppo continuo. Da allora attraverso il lavoro del laboratorio R&D, **CIMENTO®** ha progressivamente e costantemente evoluto la propria tecnologia, portando alla creazione di prodotti sempre più attuali e innovativi; sviluppando nuovi sistemi e formulazioni, colori, texture e finiture, adattabili a diversi contesti architettonici e di design.

L'industrializzazione del processo ha permesso di realizzare lastre flessibili a basso spessore, ideali per il rivestimento di superfici sia planari che curve, ampliando così le possibilità applicative. A queste si affiancano pannelli per il rivestimento di facciate e formelle decorative per interni ed esterni, offrendo soluzioni versatili per l'architettura contemporanea.

*The initial project took shape in 2010 with the first product: a wood panel clad in cement mortar. An initial exploration of the aesthetic and functional potential of the material led to a path of ongoing research and development. Since then, thanks to the work of the R&D laboratory, **CIMENTO®** has progressively and steadily evolved its technology, leading to the creation of increasingly contemporary and innovative products; developing new systems and formulations, colours, textures and finishes, adaptable to various architectural and design contexts.*

The industrialisation of the process has enabled the production of flexible, low-thickness slabs, ideal for cladding flat and curved surfaces, thus expanding application options. These are complemented by façade cladding panels and decorative tiles for interior and exterior use, offering versatile solutions for contemporary architecture

OUR CULTURE

Essere vicini a Venezia significa immergersi in un contesto culturale dove architettura, arte e sperimentazione si intrecciano da secoli. Questo legame ispira la visione di **CIMENTO®**, nata per dare forma alle idee di architetti e designer di fama internazionale. In un territorio che ha sempre accolto innovazione e sfide progettuali, sviluppiamo soluzioni uniche, coniugando ricerca, artigianalità e un'estetica che dialoga con la storia e il futuro del design.

*Being located near Venice allows us to immerse ourselves in a rich cultural context where architecture, art, and experimentation have coexisted for centuries. This deep-rooted connection fuels the vision of **CIMENTO®**, which aims to bring the ideas of renowned international architects and designers to life. In a region that has always embraced innovation and design challenges, we create exceptional solutions by blending research, craftsmanship, and an aesthetic that harmonises with both the history and the future of design.*



PANELS

BOISERIE *BOISERIE*

DESIGN
R&D CIMENTO



Formati	Sizes	Weight	Sp. Thick.
3600 x 1200 mm		74,5 kg	20,5 mm
3000 x 1200 mm		62 kg	20,5 mm

CIMENTO® PANELS rappresentano una soluzione all'avanguardia nel settore dei materiali da rivestimento.

Pensati per offrire un'armonia perfetta tra estetica e funzionalità, **CIMENTO®** PANELS sono realizzati con un'innovativa miscela a base di cemento, che contraddistingue il prodotto per la texture naturale e il suo design minimalista, ideale per creare superfici continue di grande impatto visivo.

CIMENTO® PANELS è supportato da un pannello truciolare ecologico 100% riciclato del gruppo Mauro Saviola.

***CIMENTO®** PANELS are a cutting-edge solution in the field of cladding materials.*

*Designed to offer perfect harmony between aesthetics and functionality, **CIMENTO®** PANELS are made of an innovative cement-based mixture, making the product stand out with its natural texture and minimalist design, ideal for creating visually seamless surfaces with great visual appeal.*

CIMENTO® PANELS is supported by a 100% recycled ecological chipboard panel from the Mauro Saviola group.





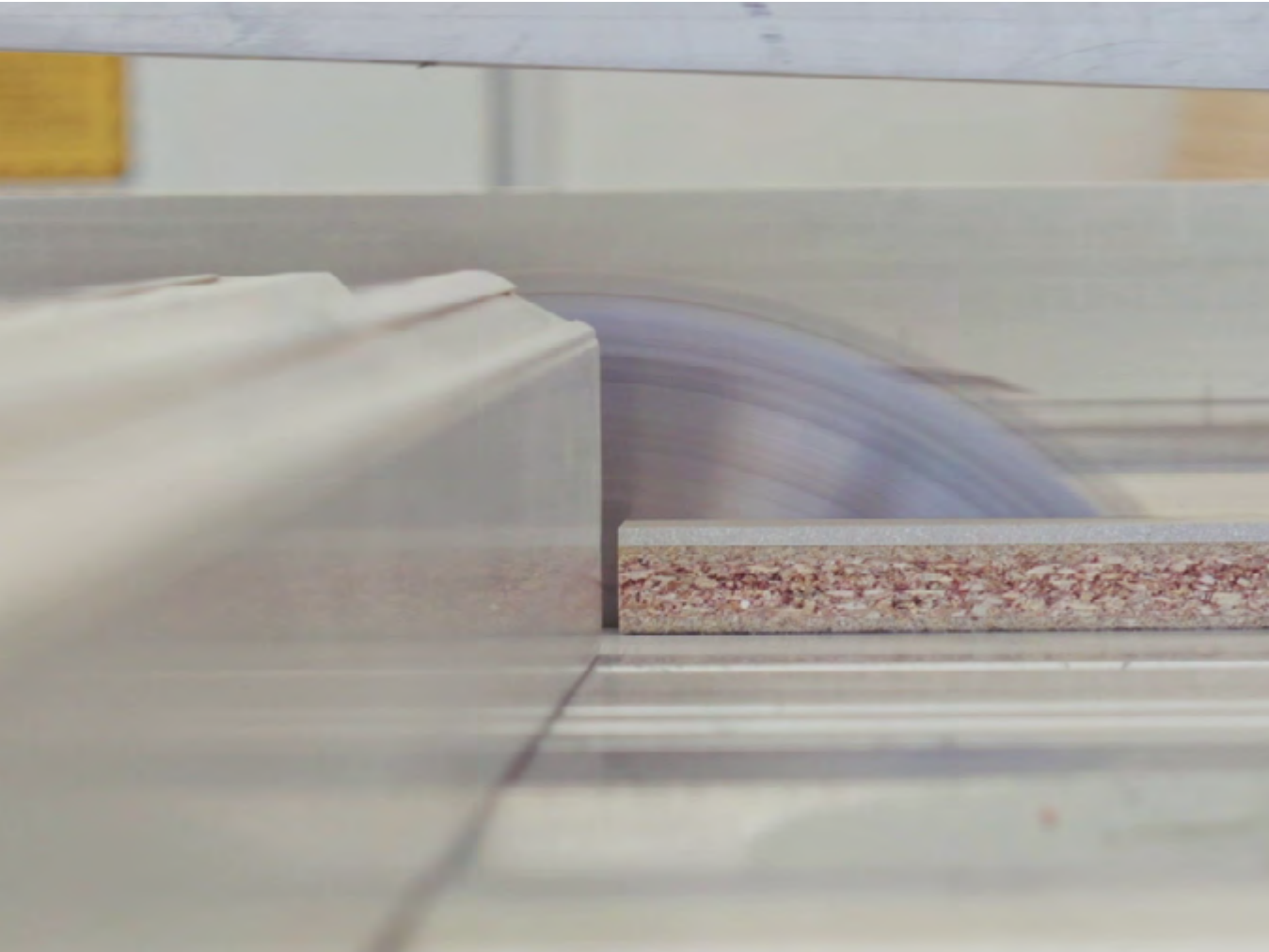
CIMENTO®



- | PANELS Liscio colore CL02 Smooth color CL02
- PANELS Ordito 7.1 colore CL02 Ordito 7.1 color CL02

Con un peso di 17 kg/m² ed uno spessore di soli 20,5 mm, **CIMENTO®** PANELS offrono un'elevata leggerezza senza compromettere la robustezza e la durabilità, rendendoli ideali per applicazioni in spazi dal design raffinato.

*With a reduced thickness of only 17 kg/m² and measuring just 20.5 mm thick, **CIMENTO®** PANELS offer exceptional lightness without compromising strength and durability, making them ideal for applications in spaces with refined design.*



CIMENTO PANELS taglio cutting |

CIMENTO® PANELS combinano le classiche finiture **CIMENTO®** ad un truciolare ecologico 100% riciclato Saviola, rendendo il prodotto adatto alle classiche lavorazioni di falegnameria. Un prodotto di concezione innovativa, che può essere lavorato e processato da macchinari e strumenti comuni. Riuscendo così ad abbinare modo efficace prestazioni tecniche elevate ad una resa estetica sofisticata, inserendosi perfettamente in contesti architettonici che richiedono soluzioni innovative e sostenibili.

CIMENTO® PANELS combine classic **CIMENTO®** finishes with a wooden backing panel, making the product ideal for traditional joinery work. This innovative product can be machined and processed using conventional machinery and tools. They therefore effectively combine high-tech performance with sophisticated aesthetics, fitting perfectly into architectural contexts requiring innovative and sustainable solutions.



| CIMENTO PANELS bordatura edge banding





WILL

LASTRE *SLABS*

DESIGN
R&D CIMENTO



Formati	Sizes	Sp.	Thick.
3600 x 1200 mm		3 mm	
3000 x 1200 mm		3 mm	

Le lastre **CIMENTO® WILL** rappresentano una soluzione all'avanguardia nel settore dei materiali da rivestimento, pensate per offrire un'armonia perfetta tra estetica e funzionalità. Realizzate con un'innovativa miscela a base di cemento, queste lastre si contraddistinguono per la texture naturale e il design minimalista; ideali per creare superfici continue di grande impatto visivo.

CIMENTO® WILL slabs are a cutting-edge solution in the field of cladding materials, designed to offer perfect harmony between aesthetics and functionality. Made from an innovative cement-based mixture, these slabs stand out for their natural texture and minimalist design; ideal for creating visually seamless surfaces with great visual appeal.



| WILL lastra liscio su ZITELLA sgabello smooth slab on ZITELLA stool
 — WILL Liscio colore CLO2 Smooth color CL02

Con un peso di 5kg/m² ed uno spessore di soli 3mm, **CIMENTO®** WILL offrono un'elevata leggerezza senza compromettere la robustezza e la durabilità, rendendoli ideali per applicazioni in spazi dal design raffinato.

*With a reduced thickness of only 5kg/m² and measuring just 3mm thick, **CIMENTO®** WILL offer exceptional lightness without compromising strength and durability, making them ideal for applications in spaces with refined design.*



WILL Liscio colore CL02 Smooth color CL02



WILL lastra griglia slab griglia

FINISHES

PANELS & WALL

LISCIO

DESIGN
R&D CIMENTO

LISCIO

Le lastre **CIMENTO®** WILL rappresentano una soluzione all'avanguardia nel settore dei materiali da rivestimento, pensate per offrire un'armonia perfetta tra estetica e funzionalità.

Grazie a uno spessore ridotto di soli 3 millimetri ed un peso di 5 kg/m², le lastre **CIMENTO®** WILL offrono un'elevata leggerezza senza compromettere la robustezza e la durabilità, rendendole ideali per applicazioni in spazi dal design raffinato.

CIMENTO® WILL slabs are a cutting-edge solution in the field of cladding materials, designed to offer perfect harmony between aesthetics and functionality.

With a reduced thickness of only 3 millimetres and a weight of just 5 kg/m², **CIMENTO®** WILL slabs are extremely lightweight without sacrificing strength and durability, making them ideal for applications in elegantly designed spaces.



WILL liscio smooth |



| PANELS liscio smooth





finishing : Liscio CL02

COLOR CHART



LISCIO					
SUPPORT	FEATURES	DIM.	WEIGHT	IN/OUT	APPLICATION
WILL	CIMENTO® Slabs reinforced with fibreglass mesh Basic protective treatment included Flexible can be curved up to 120mm radius (according to the agglomerate size) FIRE RATED / A2 - s1, d0 according to UNI EN 13501-1:2019	3600 x 1200 Th. 3 mm	6 kg/sgm	INDOOR/SOFTOUTDOOR	wall / furnitures
WILL	CIMENTO® Slabs reinforced with fibreglass mesh Basic protective treatment included Flexible can be curved up to 120mm radius (according to the agglomerate size) FIRE RATED / A2 - s1, d0 according to UNI EN 13501-1:2019	3000 x 1200 Th. 3 mm	6 kg/sgm	INDOOR/SOFTOUTDOOR	wall / furnitures
PANELS	Pannello Ecologico Saviola / chipboard - FSC / CARB2 / ASTM84/91B Substrate thickness: 18 mm CIMENTO® thickness: 2÷2.5mm Basic protective treatment included FIRE RATED / B - s1, d0 according to UNI EN 13501 – 1:2019	3600 x 1200 Th. 20÷20,5 mm	18 kg/sgm	INDOOR	wall / furnitures
PANELS	Pannello Ecologico Saviola / chipboard - FSC / CARB2 / ASTM84/91B Substrate thickness: 18 mm CIMENTO® thickness: 2÷2.5mm Basic protective treatment included FIRE RATED / B - s1, d0 according to UNI EN 13501 – 1:2019	3000 x 1200 Th. 20÷20,5 mm	18 kg/sgm	INDOOR	wall / furnitures
RIALTO	CIMENTO® on fibercement panel Substrate thickness: 8 mm CIMENTO® thickness: 2÷2.5mm Basic protective treatment included FIRE RATED / A2 - s1, d0 according to UNI EN 13501 – 1:2019	3000 x 1200 Th. 10÷10.5mm	17 kg/sgm	OUTDOOR	ventilated facade
				OUTDOOR	ventilated facade

SABBIATO

DESIGN
R&D CIMENTO

S A B B I A T O

CIMENTO® Sabbiato esprime l'essenza del materiale attraverso una finitura grezza che valorizza la sua profondità tattile e il carattere robusto. La superficie rivela una ruvidità raffinata che richiama un senso di artigianalità.

CIMENTO® *Sabbiato embraces the raw essence of the material through a sandblasted finish that enhances its tactile depth and rugged character. The surface reveals a refined roughness evoking a sense of craftsmanship.*



finishing : Sabbiato CL36

COLOR CHART



SABBIATO					
SUPPORT	FEATURES	DIM.	WEIGHT	IN/OUT	APPLICATION
WILL	CIMENTO® Slabs reinforced with fibreglass mesh Basic protective treatment included Flexible can be curved up to 120mm radius (according to the agglomerate size) FIRE RATED / A2 - s1, d0 according to UNI EN 13501-1:2019	3600 x 1200 Th. 3 mm	6 kg/sqm	INDOOR/SOFTOUT-DOOR	wall / furnitures
WILL	CIMENTO® Slabs reinforced with fibreglass mesh Basic protective treatment included Flexible can be curved up to 120mm radius (according to the agglomerate size) FIRE RATED / A2 - s1, d0 according to UNI EN 13501-1:2019	3000 x 1200 Th. 3 mm	6 kg/sqm	INDOOR/SOFTOUT-DOOR	wall / furnitures
PANELS	Pannello Ecologico Saviola / chipboard - FSC / CARB2 / ASTM84/91B Substrate thickness: 18 mm CIMENTO® thickness: 2÷2.5mm Basic protective treatment included FIRE RATED / B - s1, d0 according to UNI EN 13501 – 1:2019	3600 x 1200 Th. 20÷20,5 mm	18 kg/sqm	INDOOR	wall / furnitures
PANELS	Pannello Ecologico Saviola / chipboard - FSC / CARB2 / ASTM84/91B Substrate thickness: 18 mm CIMENTO® thickness: 2÷2.5mm Basic protective treatment included FIRE RATED / B - s1, d0 according to UNI EN 13501 – 1:2019	3000 x 1200 Th. 20÷20,5 mm	18 kg/sqm	INDOOR	wall / furnitures
RIALTO	CIMENTO® on fibercement panel Substrate thickness: 8 mm CIMENTO® thickness: 2÷2.5mm Basic protective treatment included FIRE RATED / A2 - s1, d0 according to UNI EN 13501 – 1:2019	3000 x 1200 Th. 10÷10.5mm	17 kg/sqm	OUTDOOR	ventilated facades

TERRAZZO

DESIGN
R&D CIMENTO

TERRAZZO

CIMENTO® Terrazzo è una finitura tattile e dal carattere minimalista. La superficie rivela movimenti morbidi e irregolari donando al cemento un aspetto delicato e dinamico, capace di valorizzare ambienti contemporanei con equilibrio e sobrietà.

CIMENTO® Terrazzo is a material finish with a minimalist character. The surface reveals soft, irregular movements that give the cement a delicate and dynamic appearance, enhancing contemporary spaces with balance and subtlety.



finishing : P9

COLOR CHART



CURATED SELECTION



TERRAZZO					
SUPPORT	FEATURES	DIM.	WEIGHT	IN/OUT	APPLICATION
WILL	CIMENTO® Slabs reinforced with fibreglass mesh Basic protective treatment included Flexible can be curved up to 120mm radius (according to the agglomerate size) FIRE RATED / A2 - s1, d0 according to UNI EN 13501-1:2019	3600 x 1200 Th. 3 mm	6 kg/sqm	INDOOR/SOFTOUTDOOR	wall / furnitures
WILL	CIMENTO® Slabs reinforced with fibreglass mesh Basic protective treatment included Flexible can be curved up to 120mm radius (according to the agglomerate size) FIRE RATED / A2 - s1, d0 according to UNI EN 13501-1:2019	3000 x 1200 Th. 3 mm	6 kg/sqm	INDOOR/SOFTOUTDOOR	wall / furnitures
PANELS	Pannello Ecologico Saviola / chipboard - FSC / CARB2 / ASTM84/91B Substrate thickness: 18 mm CIMENTO® thickness: 2÷2.5mm Basic protective treatment included FIRE RATED / B - s1, d0 according to UNI EN 13501 – 1:2019	3600 x 1200 Th. 20÷20,5 mm	18 kg/sqm	INDOOR	wall / furnitures
PANELS	Pannello Ecologico Saviola / chipboard - FSC / CARB2 / ASTM84/91B Substrate thickness: 18 mm CIMENTO® thickness: 2÷2.5mm Basic protective treatment included FIRE RATED / B - s1, d0 according to UNI EN 13501 – 1:2019	3000 x 1200 Th. 20÷20,5 mm	18 kg/sqm	INDOOR	wall / furnitures
RIALTO	CIMENTO® on fibercement panel Substrate thickness: 8 mm CIMENTO® thickness: 2÷2.5mm Basic protective treatment included FIRE RATED / A2 - s1, d0 according to UNI EN 13501 – 1:2019	3000 x 1200 Th. 10÷10.5mm	17 kg/sqm	OUTDOOR	ventilated facades

R I G A T O

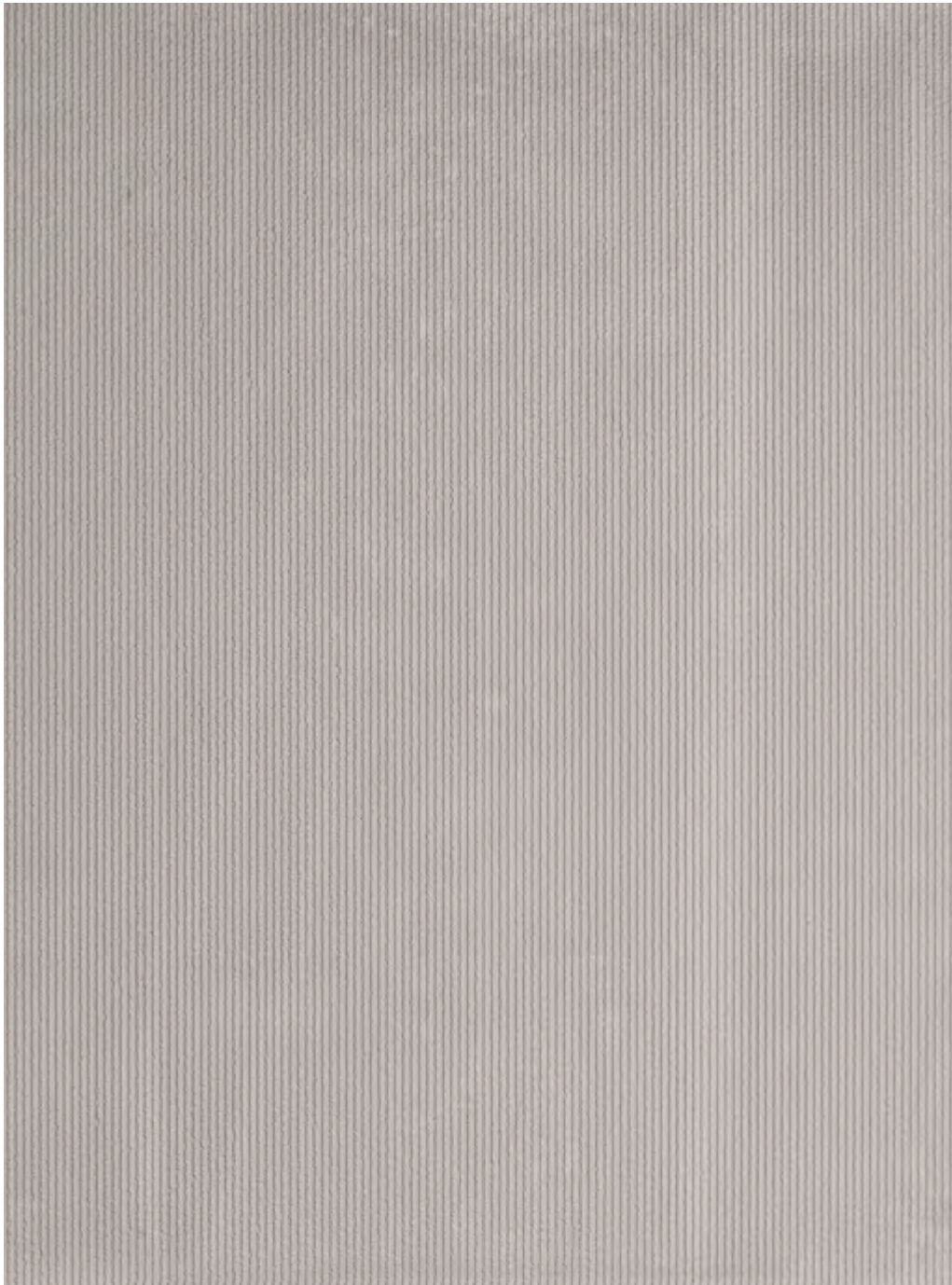
DESIGN
R & D C I M E N T O

R I G A T O

Qui ut audisci omnia simus aut qui consequi
ibusam cullacest, od es simet dus deprehendam
doluptatum quo quas di demolupid quiae quo
omnis soluptatias re nat et aligenia sit inimus rem
hillaborro dit ut vitatur aut is e

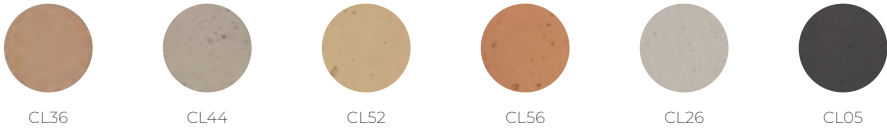
*t que cupiducimet re exerferum rerumquam non
core ipisqua menecto odiciantium et omnimini que
et, sitatur, quas re aut fugit am quis cum quibustiati
to erumqui re volore nat.*

*Escilitatem qui dolupta temolut labo. Et etur sequi
omnis doluptiandi sint.*



finishing : CL26

COLOR CHART



RIGATO					
SUPPORT	FEATURES	DIM.	WEIGHT	IN/OUT	APPLICATION
WILL	CIMENTO® Slabs reinforced with fibreglass mesh Basic protective treatment included FIRE RATED / A2-S1-D0 according to UNI EN 13501-1:2019 The product with this finish is not flexible	3600 x 1200 Th. 3 mm	6 kg/sqm	INDOOR/ SOFTOUTDOOR	wall / furnitures
WILL	CIMENTO® Slabs reinforced with fibreglass mesh Basic protective treatment included FIRE RATED / A2-S1-D0 according to UNI EN 13501-1:2019 The product with this finish is not flexible	3000 x 1200 Th. 3 mm	6 kg/sqm	INDOOR/ SOFTOUTDOOR	wall / furnitures
PANELS	Pannello Ecologico Saviola / chipboard - FSC / CARB2 / ASTM84/91B Substrate thickness: 18 mm CIMENTO® thickness: 2÷2.5mm Basic protective treatment included FIRE RATED / B - s1, d0 according to UNI EN 13501 – 1:2019	3600 x 1200 Th. 20÷20,5 mm	18 kg/sqm	INDOOR	wall / furnitures
PANELS	Pannello Ecologico Saviola / chipboard - FSC / CARB2 / ASTM84/91B Substrate thickness: 18 mm CIMENTO® thickness: 2÷2.5mm Basic protective treatment included FIRE RATED / B - s1, d0 according to UNI EN 13501 – 1:2019	3000 x 1200 Th. 20÷20,5 mm	18 kg/sqm	INDOOR	wall / furnitures
*Price including concealed fixing bushings					

GRIGLIA

DESIGN
PATRICIA URQUIOLA

GRIGLIA


Griglia è un omaggio alla tradizione veneziana legata alla tessitura di preziosi broccati. Come i fili tesi sul telaio, così le scanalature dei pannelli **CIMENTO®** creano un effetto “pettine” simile a quello dell'orditura, con un suggestivo risultato di contrasti chiaro-scuro. L'originalità del sistema boiserie, disponibile in tre differenti varianti di disegno, ne permette l'utilizzo in qualsiasi contesto, dal residenziale al contract, consentendo di creare ambienti unici e soluzioni progettuali innovative.

Griglia pays homage to the Venetian tradition of weaving exquisite brocades. Like threads stretched across a loom, the grooves in the CIMENTO® panels create a “comb” effect similar to that of a warp, resulting in striking light-dark contrasts. The originality of the boiserie system, available in three different designs, allows for its use in any context, from residential to contract, enabling the creation of unique spaces and innovative design solutions.




finishing : Griglia custom color


COLOR CHART




CL26



CL52



CL56



CL44

CURATED SELECTION



GR1



GR3

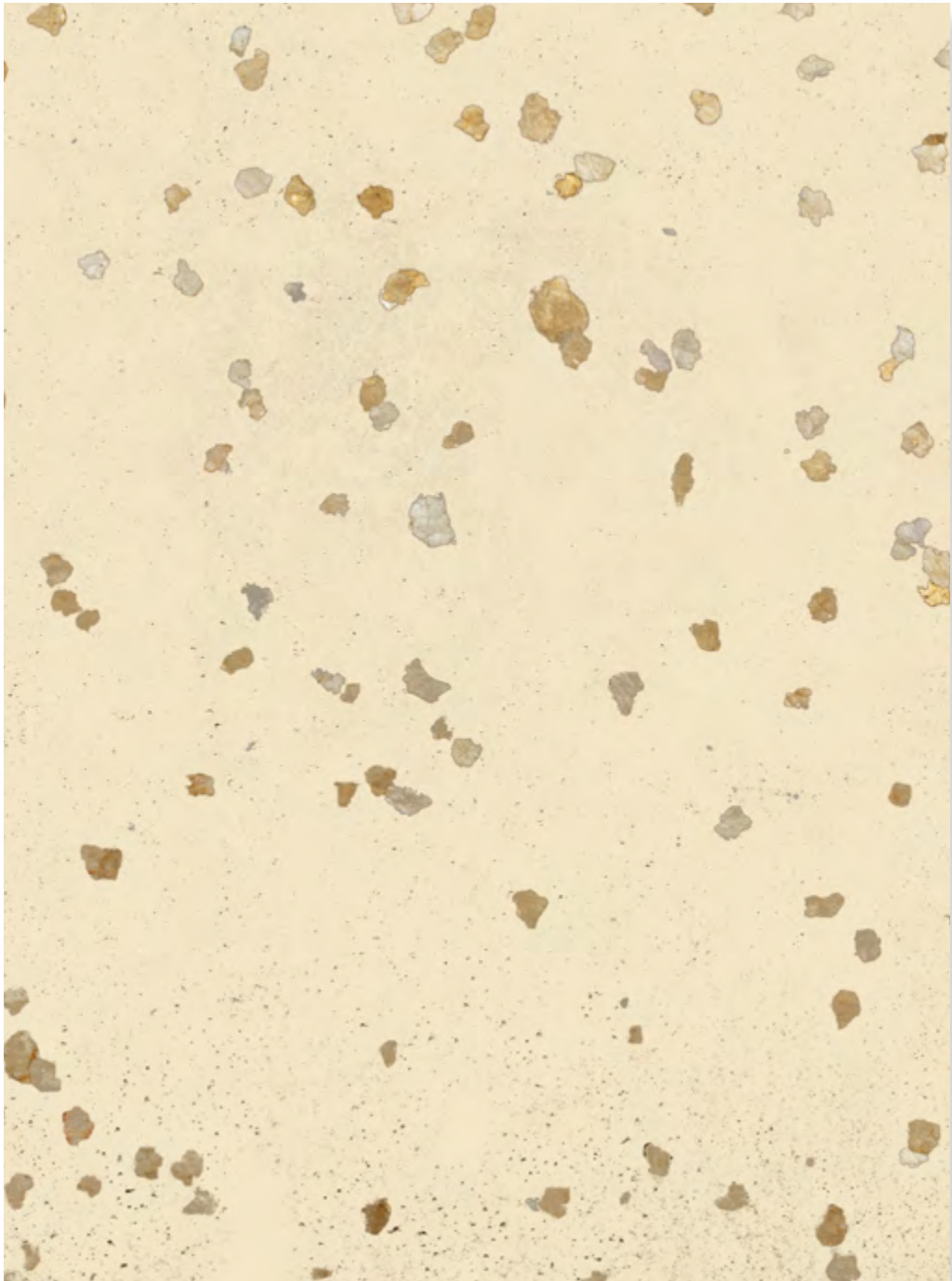


GR5

GRIGLIA					
SUPPORT	FEATURES	DIM.	WEIGHT	IN/OUT	APPLICATION
WILL	CIMENTO® Slabs reinforced with fibreglass mesh Basic protective treatment included FIRE RATED / A2-S1-D0 according to UNI EN 13501-1:2019	3500 x 700 Th. 5+/-1 mm	7 kg/sqm	INDOOR/SOFTOUTDOOR	wall / furnitures
	The product with this finish is not flexible				
PANELS	Pannello Ecologico Saviola / chipboard - FSC / CARB2 / ASTM84/91B Substrate thickness: 18 mm CIMENTO® thickness: 2÷2.5mm Basic protective treatment included FIRE RATED / B - s1, d0 according to UNI EN 13501 – 1:2019	3500 x 700 Th. 20+/-1 mm	18 kg/sqm	INDOOR	wall / furnitures

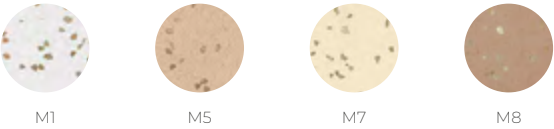
MICA

DESIGN
R&D CIMENTO



finishing : Mica

COLOR CHART



Disponibile anche con Mica colore argento
Also available with silver Mica

MICA					
SUPPORT	FEATURES	DIM.	WEIGHT	IN/OUT	APPLICATION
WILL	CIMENTO® Slabs reinforced with fibreglass mesh Basic protective treatment included Flexible can be curved up to 120mm radius (according to the agglomerate size) FIRE RATED / A2 - s1, d0 according to UNI EN 13501-1:2019	3600 x 1200 Th. 3 mm	6 kg/sqm	INDOOR/SOFTOUTDOOR	wall / furnitures
WILL	CIMENTO® Slabs reinforced with fibreglass mesh Basic protective treatment included Flexible can be curved up to 120mm radius (according to the agglomerate size) FIRE RATED / A2 - s1, d0 according to UNI EN 13501-1:2019	3000 x 1200 Th. 3 mm	6 kg/sqm	INDOOR/SOFTOUTDOOR	wall / furnitures
PANELS	Pannello Ecologico Saviola / chipboard - FSC / CARB2 / ASTM84/91B Substrate thickness: 18 mm CIMENTO® thickness: 2÷2.5mm Basic protective treatment included FIRE RATED / B - s1, d0 according to UNI EN 13501 – 1:2019	3600 x 1200 Th. 20÷20,5 mm	18 kg/sqm	INDOOR	wall / furnitures
PANELS	Pannello Ecologico Saviola / chipboard - FSC / CARB2 / ASTM84/91B Substrate thickness: 18 mm CIMENTO® thickness: 2÷2.5mm Basic protective treatment included FIRE RATED / B - s1, d0 according to UNI EN 13501 – 1:2019	3000 x 1200 Th. 20÷20,5 mm	18 kg/sqm	INDOOR	wall / furnitures

AND O

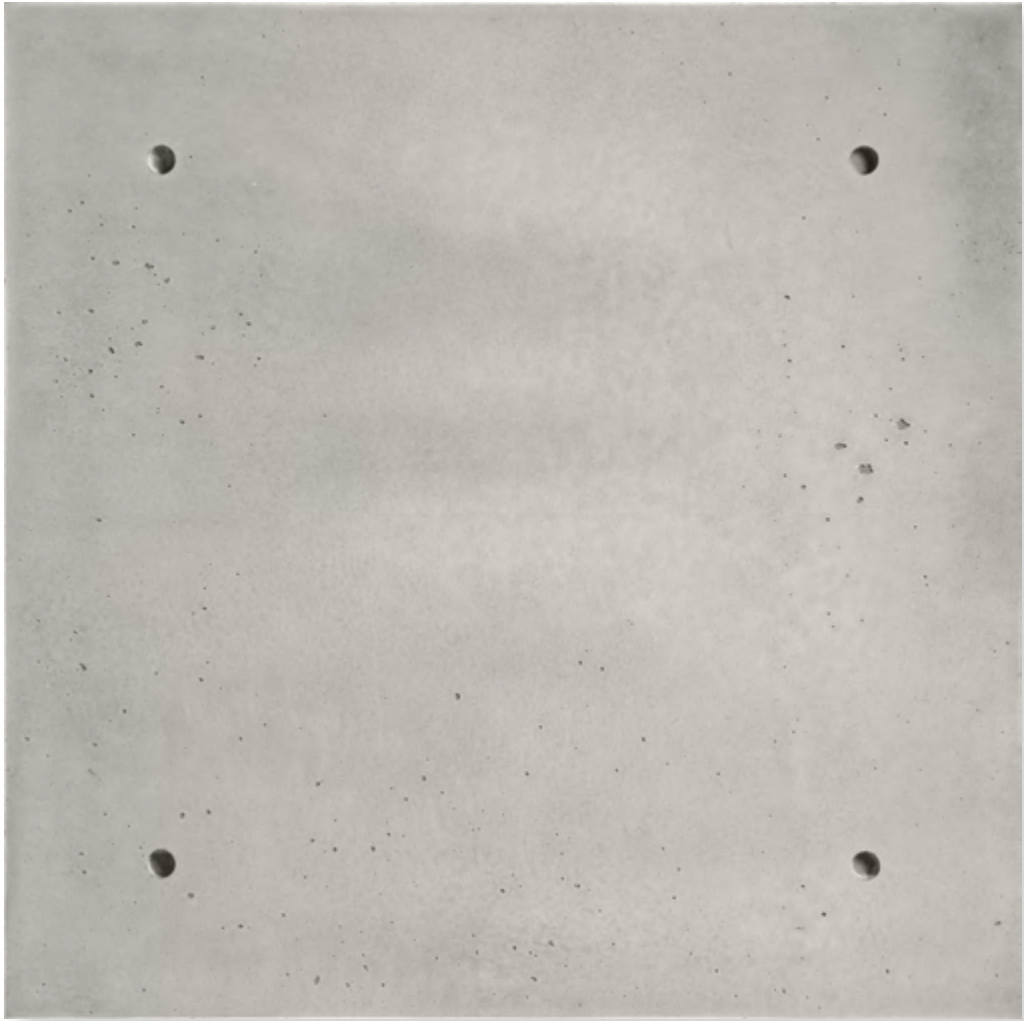
DESIGN
R&D CIMENTO

A N D O

CIMENTO® Ando è una finitura liscia e raffinata, ispirata alle forme essenziali, primitive e geometriche, che evocano un'estetica sobria ma profondamente materica. Un richiamo alle atmosfere del brutalismo, dove il cemento esprime forza, autenticità e rigore formale.

CIMENTO® Ando is a smooth and refined finish, inspired by essential, primitive, and geometric forms that evoke a sober yet deeply material aesthetic. Inspired by the atmosphere of Brutalism, where concrete conveys strength, authenticity, and formal rigor.





finishing : ANDO CL02

COLOR CHART



CL02



CL04



CL05



CL26



CL44

ANDO SUPPORT	FEATURES	DIM.	WEIGHT	IN/OUT	APPLICATION
PANELS	Pannello Ecologico Saviola / chipboard - FSC / CARB2 / ASTM84/91B Substrate thickness: 18 mm CIMENTO® thickness: 2÷2.5mm Basic protective treatment included FIRE RATED / B - s1, d0 according to UNI EN 13501 – 1:2019	1200 x 1200 Th. 20÷20,5 mm	18 kg/sqm	INDOOR	wall / furnitures
PANELS	Pannello Ecologico Saviola / chipboard - FSC / CARB2 / ASTM84/91B Substrate thickness: 18 mm CIMENTO® thickness: 2÷2.5mm Basic protective treatment included FIRE RATED / B - s1, d0 according to UNI EN 13501 – 1:2019	CUSTOM SIZE	18 kg/sqm	INDOOR	wall / furnitures

TAVOLATO

DESIGN
R&D CIMENTO

TERRAZZO

CIMENTO® Tavolato riproduce le venature e la texture del legno, ottenute grazie all'impronta lasciata da tavole lignee sulla superficie del cemento fresco. Il risultato è un effetto naturale e sofisticato, che unisce il calore visivo del legno alla solidità e contemporaneità del cemento.

CIMENTO® *Tavolato replicates the grain and texture of wood, created through the imprint left by wooden boards on the surface of fresh cement. The result is a natural and sophisticated effect that combines the visual warmth of wood with the strength and contemporary character of cement.*

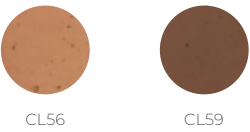


finishing : CL26

COLOR CHART



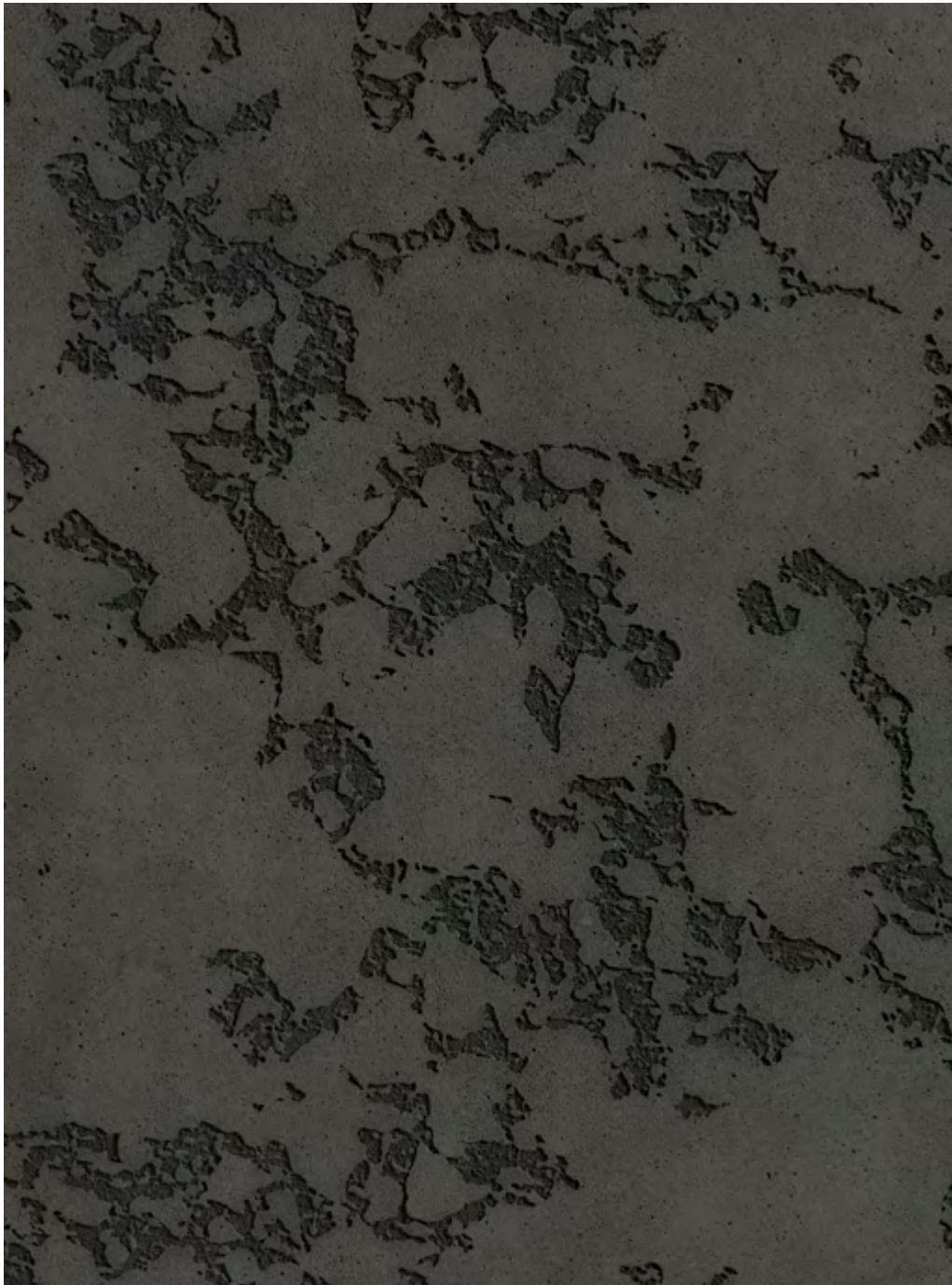
CURATED SELECTION



TAVOLATO					
SUPPORT	FEATURES	DIM.	WEIGHT	IN/OUT	APPLICATION
WILL	CIMENTO® Slabs reinforced with fibreglass mesh Basic protective treatment included Flexible can be curved up to 120mm radius (according to the agglomerate size) FIRE RATED / A2 - s1, d0 according to UNI EN 13501-1:2019	3500 x 600 Th: 3÷5 mm	10 kg/sqm	INDOOR	wall / furnitures
	Pannello Ecologico Saviola / chipboard - FSC / CARB2 / ASTM84/91B Substrate thickness: 18 mm				
PANELS	CIMENTO® thickness: 2÷2.5mm Basic protective treatment included FIRE RATED / B - s1, d0 according to UNI EN 13501 – 1:2019	3500 x 600 Th: 20÷20,5 mm	18 kg/sqm	INDOOR	wall / furnitures


VIBRATO

DESIGN
R&D CIMENTO




finishing : Vibrato


COLOR CHART




CL02




CL04




CL05




CL06




CL26



CL44



CL52



CL59

VIBRATO					
SUPPORT	FEATURES	DIM.	WEIGHT	IN/OUT	APPLICATION
PANELS	Pannello Ecologico Saviola / chipboard - FSC / CARB2 / ASTM84/91B Substrate thickness: 18 mm	3600 x 1200 Th. 20÷20,5 mm	18 kg/sqm	INDOOR	wall / furnitures
	CIMENTO® thickness: 2÷2,5mm Basic protective treatment included FIRE RATED / B - s1, d0 according to UNI EN 13501 - 12019				
PANELS	Pannello Ecologico Saviola / chipboard - FSC / CARB2 / ASTM84/91B Substrate thickness: 18 mm	3000 x 1200 Th. 20÷20,5 mm	19 kg/sqm	INDOOR	wall / furnitures
	CIMENTO® thickness: 2÷2,5mm Basic protective treatment included FIRE RATED / B - s1, d0 according to UNI EN 13501 - 12019				
RIALTO	CIMENTO® on fibercement panel Substrate thickness: 8 mm	3000x1200 Th. 10÷10,5mm	17 kg/sqm	OUTDOOR	ventilated facade
	CIMENTO® thickness: 2÷2,5mm Basic protective treatment included FIRE RATED / A2 - s1, d0 according to UNI EN 13501 - 12019			OUTDOOR	ventilated facade

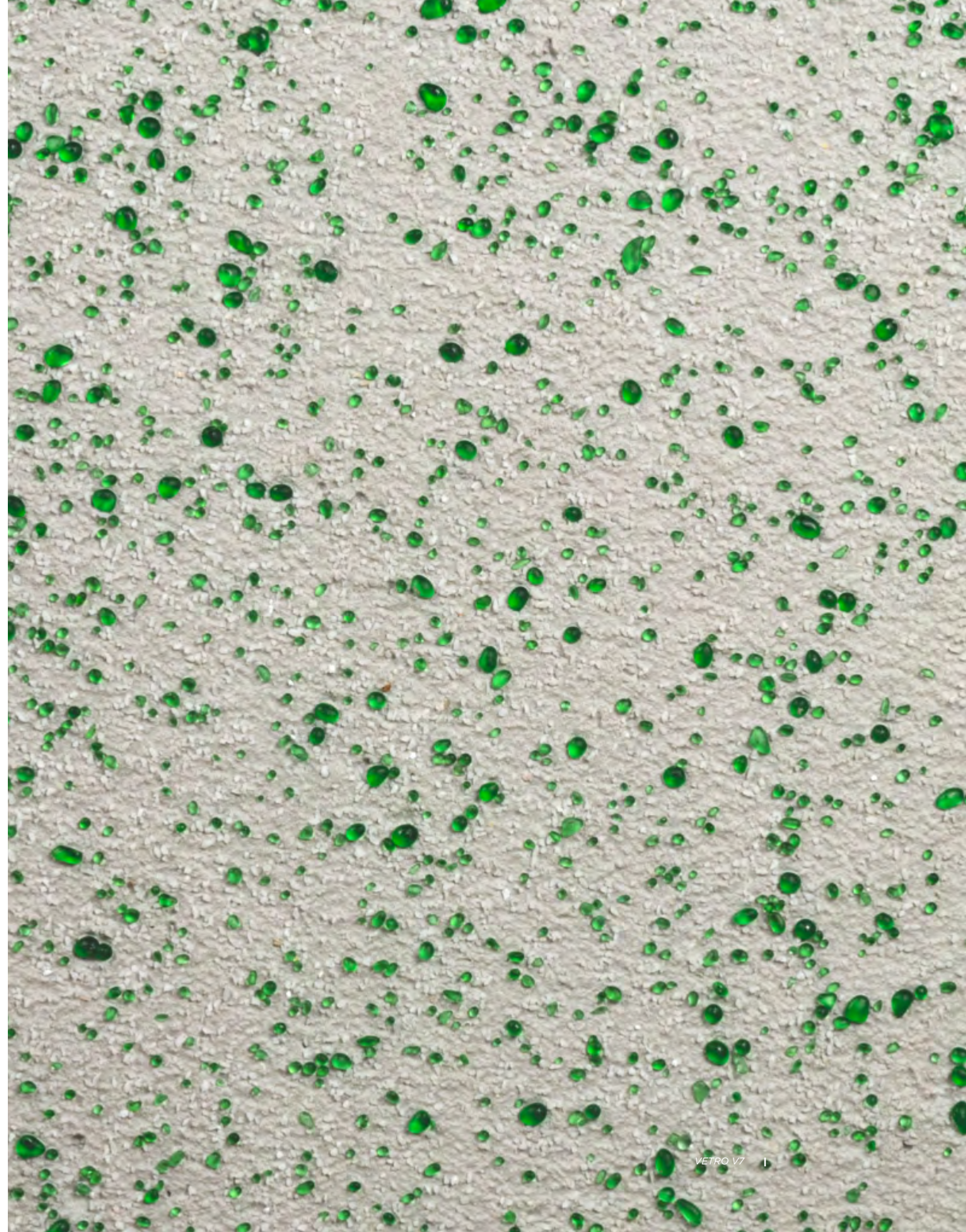
VETRO

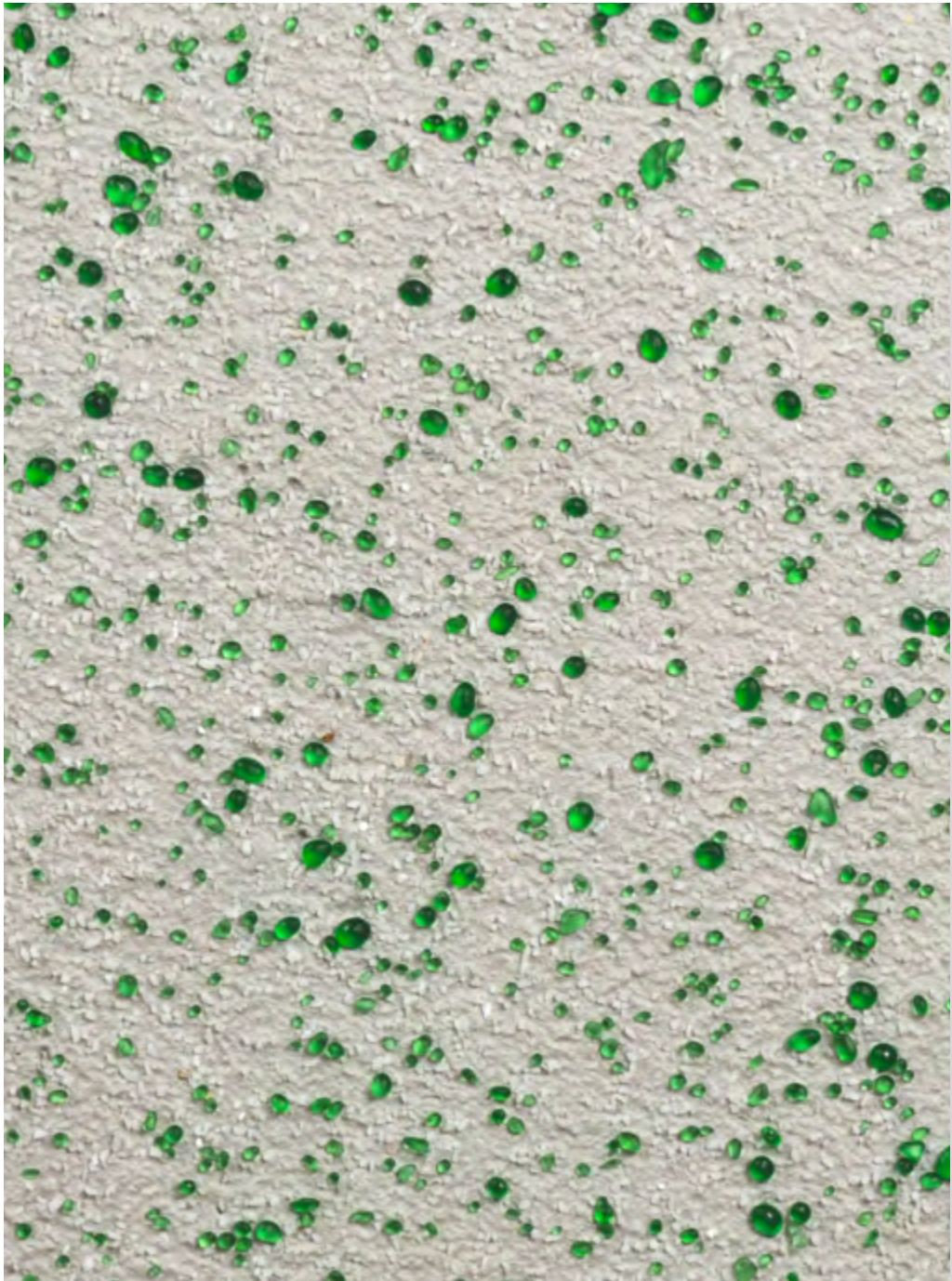
DESIGN
R&D CIMENTO

VETRO

Vetro è una finitura che unisce la matericità del **CIMENTO®** alla brillantezza degli inserti in vetro colorato. Il contrasto tra la superficie grezza e la luminosità del vetro crea un effetto unico, elegante e contemporaneo, ideale per valorizzare ambienti architettonici moderni con dettagli di forte impatto visivo.

*Vetro combines the raw texture of **CIMENTO®** with the brilliance of colored glass inserts. The contrast between the rough surface and the luminous glass creates a unique, elegant, and contemporary effect, ideal for enhancing modern architectural spaces with bold, visually striking details.*





finishing : V7

COLOR CHART



VETRO					
SUPPORT	FEATURES	DIM.	WEIGHT	IN/OUT	APPLICATION
WILL	CIMENTO® Slabs reinforced with fibreglass mesh Basic protective treatment included FIRE RATED / A2-S1-D0 according to UNI EN 13501-1:2019 The product with this finish is not flexible	3600 x 1200 Th. 3 mm	6 kg/sqm	INDOOR/SOFTOUTDOOR	wall / furnitures
WILL	CIMENTO® Slabs reinforced with fibreglass mesh Basic protective treatment included FIRE RATED / A2-S1-D0 according to UNI EN 13501-1:2019 The product with this finish is not flexible	3000 x 1200 Th. 3 mm	6 kg/sqm	INDOOR/SOFTOUTDOOR	wall / furnitures
PANELS	Pannello Ecologico Saviola / chipboard - FSC / CARB2 / ASTM84/91B Substrate thickness: 18 mm CIMENTO® thickness: 2÷2.5mm Basic protective treatment included FIRE RATED / B - s1, d0 according to UNI EN 13501 – 1:2019	3600 x 1200 Th. 20÷20,5 mm	18 kg/sqm	INDOOR	wall / furnitures
PANELS	Pannello Ecologico Saviola / chipboard - FSC / CARB2 / ASTM84/91B Substrate thickness: 18 mm CIMENTO® thickness: 2÷2.5mm Basic protective treatment included FIRE RATED / B - s1, d0 according to UNI EN 13501 – 1:2019	3000 x 1200 Th. 20÷20,5 mm	24 kg/sqm	INDOOR	wall / furnitures

G O F F R A T O

DESIGN
R&D CIMENTO

G O F F R A T O

CIMENTO® Goffrato è una finitura caratterizzata da una superficie materica e tridimensionale, ottenuta attraverso una lavorazione che crea un leggero rilievo decorativo. Il risultato è una texture elegante e tattile, capace di valorizzare la natura del cemento con un effetto visivo scultoreo e contemporaneo..

CIMENTO® *Goffrato is a finish defined by a three-dimensional surface, achieved through a process that creates a subtle decorative relief. The result is an elegant, tactile texture that enhances the natural character of cement with a sculptural and contemporary visual effect.*



finishing : Goffrato CL02

COLOR CHART



CL02



CL04



CL44



CL46



CL56

CURATED SELECTION



G1



G3



G5

GOFFRATO					
SUPPORT	FEATURES	DIM.	WEIGHT	IN/OUT	APPLICATION
PANELS	Pannello Ecologico Saviola / chipboard - FSC / CARB2 / ASTM84/91B Substrate thickness: 18 mm CIMENTO® thickness: 2÷2.5mm Basic protective treatment included FIRE RATED / B - s1, d0 according to UNI EN 13501 – 1:2019	3600 x 1200 Th. 20÷20,5 mm	18 kg/sqm	INDOOR	wall / furnitures
PANELS	Pannello Ecologico Saviola / chipboard - FSC / CARB2 / ASTM84/91B Substrate thickness: 18 mm CIMENTO® thickness: 2÷2.5mm Basic protective treatment included FIRE RATED / B - s1, d0 according to UNI EN 13501 – 1:2019	3000 x 1200 Th. 20÷20,5 mm	18 kg/sqm	INDOOR	wall / furnitures
RIALTO	CIMENTO® on fibercement panel Substrate thickness: 8 mm CIMENTO® thickness: 2÷2.5mm Basic protective treatment included FIRE RATED / A2 - s1, d0 according to UNI EN 13501 – 1:2019	3000x1200 Th. 10÷10.5mm	17 kg/sqm	OUTDOOR	ventilated facade
				OUTDOOR	ventilated facade

ORDITO 7.1

DESIGN
MONOGRAMMA STUDIO

ORDITO 7.1

Ordito è un omaggio alla tradizione veneziana legata alla tessitura di preziosi broccati. Come i fili tesi sul telaio, così le scanalature dei pannelli **CIMENTO®** creano un effetto “pettine” simile a quello dell'orditura, con un suggestivo risultato di contrasti chiaro-scuro. L'originalità del sistema boiserie, disponibile in tre differenti varianti di disegno, ne permette l'utilizzo in qualsiasi contesto, dal residenziale al contract, consentendo di creare ambienti unici e soluzioni progettuali innovative.

Ordito pays homage to the Venetian tradition of weaving exquisite brocades. Like threads stretched across a loom, the grooves in the CIMENTO® panels create a “comb” effect similar to that of a warp, resulting in striking light-dark contrasts. The originality of the boiserie system, available in three different designs, allows for its use in any context, from residential to contract, enabling the creation of unique spaces and innovative design solutions.

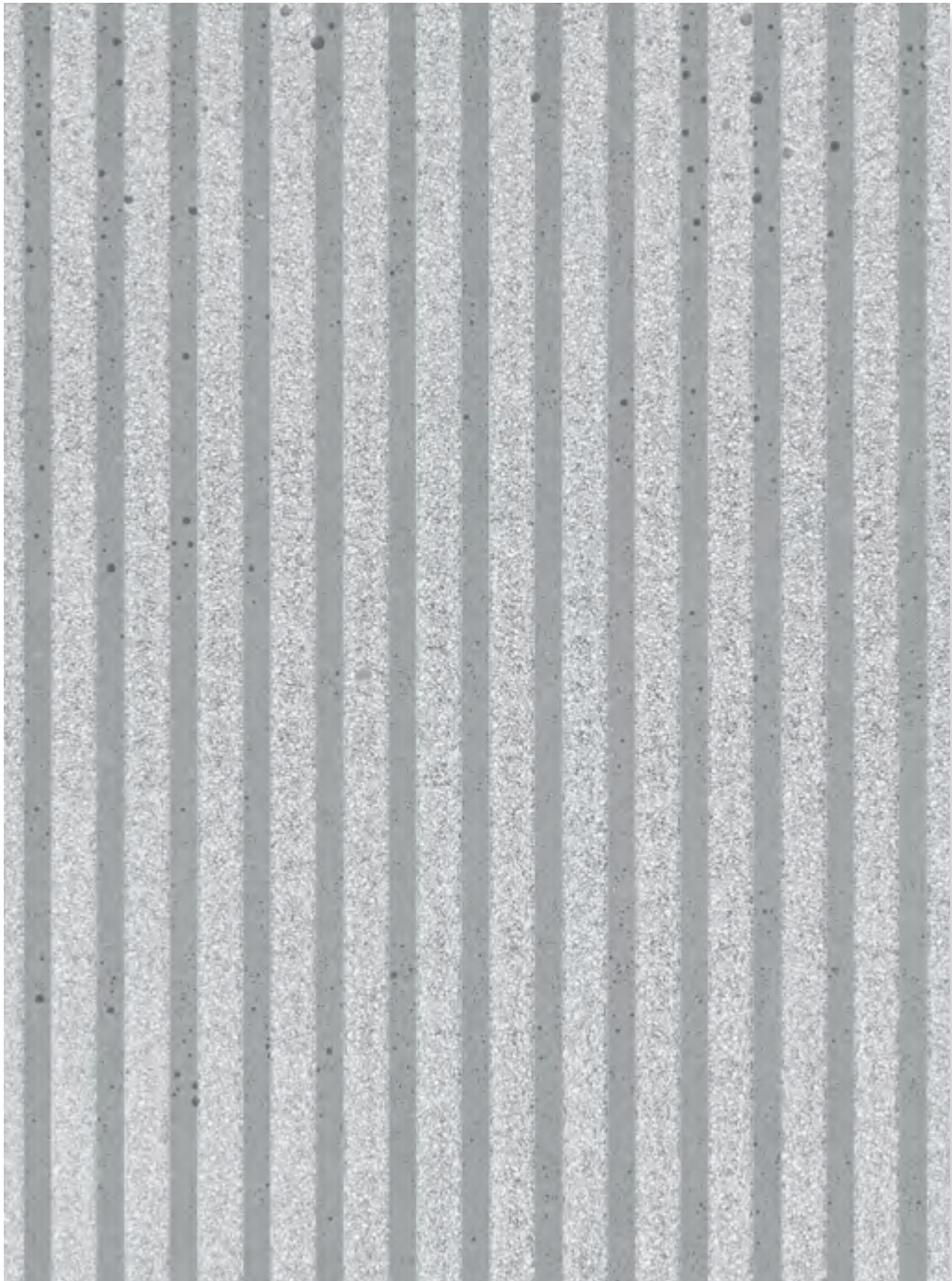


TORCELLO sgabello stool ORDITO 7.1 panels panels |



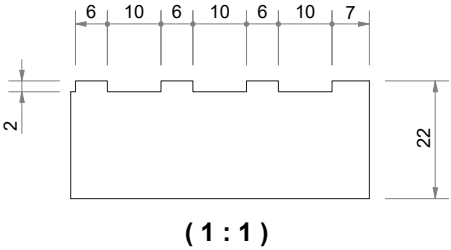
| TORCELLO panca bench ORDITO 7.1 panels panels





finishing : Ordito 7.1

COLOR CHART



ORDITO 7.1					
SUPPORT	FEATURES	DIM.	WEIGHT	IN/OUT	APPLICATION
WILL	CIMENTO® Slabs reinforced with fibreglass mesh Basic protective treatment included Flexible can be curved up to 120mm radius (according to the agglomerate size) FIRE RATED / A2 - s1, d0 according to UNI EN 13501-1:2019	3600 x 1200 Th. 3 mm	6 kg/sqm	INDOOR/SOFTOUTDOOR	wall / furnitures
WILL	CIMENTO® Slabs reinforced with fibreglass mesh Basic protective treatment included Flexible can be curved up to 120mm radius (according to the agglomerate size) FIRE RATED / A2 - s1, d0 according to UNI EN 13501-1:2019	3000 x 1200 Th. 3 mm	7 kg/sqm	INDOOR/SOFTOUTDOOR	wall / furnitures
PANELS	Pannello Ecologico Saviola / chipboard - FSC / CARB2 / ASTM84/91B Substrate thickness: 18 mm CIMENTO® thickness 2÷2.5mm Basic protective treatment included FIRE RATED / B - s1, d0 according to UNI EN 13501-1:2019	3600 x 1200 Th. 20÷20,5 mm	18 kg/sqm	INDOOR	wall / furnitures
PANELS	Pannello Ecologico Saviola / chipboard - FSC / CARB2 / ASTM84/91B Substrate thickness: 18 mm CIMENTO® thickness 2÷2.5mm Basic protective treatment included FIRE RATED / B - s1, d0 according to UNI EN 13501-1:2019	3000 x 1200 Th. 20÷20,5 mm	18 kg/sqm	INDOOR	wall / furnitures

RESPONSIBILITY



R E S P O N S I B I L I T Y

La sostenibilità per **CIMENTO®** è un principio progettuale che guida ogni fase della produzione. L'impiego di aggregati minerali riciclati e di materiali certificati riduce l'impatto ambientale senza compromettere la qualità estetica e funzionale. Texture materiche, tonalità sofisticate e leggerezza strutturale si combinano in soluzioni versatili e responsabili, dove il design incontra l'innovazione per un futuro più consapevole.

*For **CIMENTO®**, sustainability is not just a goal but a guiding principle that influences every step of the production process. By using recycled mineral aggregates and certified materials, we lessen our environmental footprint without sacrificing aesthetic and functional quality. Our material textures, elegant shades, and structural lightness come together to create versatile and responsible solutions, where design and innovation converge for a more sustainable future.*

ZERO WASTE

La tecnologia **CIMENTO®** impiega oltre il 90% di aggregati minerali, recuperati dagli scarti di produzione delle grandi cave, riducendo così lo spreco di risorse non rinnovabili e tutelando il patrimonio naturale. Ogni prodotto è realizzato con materiali riciclabili e selezionato secondo rigorosi criteri di responsabilità ambientale. Il rispetto degli standard internazionali è garantito da certificazioni come FSC® e PEFC, che attestano la tracciabilità delle materie prime. Un impegno che coniuga innovazione e sostenibilità, promuovendo un design consapevole.

***CIMENTO®** technology harnesses over 90% mineral aggregates sourced from the production waste of large quarries. This approach not only reduces the waste of non-renewable resources but also helps in preserving our natural heritage. Each product incorporates recyclable materials that are meticulously selected based on strict environmental responsibility standards. We uphold compliance with international standards, supported by certifications such as FSC® and PEFC, which verify the traceability of our raw materials. This commitment merges innovation with sustainability, fostering a philosophy of conscious design.*





ISO 9001

ISO 14064

ISO 14001

CARBON NEUTRAL

FSC

NEUTRALITY & KILOMETRO ZERO

Dal 2022, la certificazione Carbon Neutrality testimonia una strategia basata su investimenti in quote di compensazione carbonio e su processi produttivi più responsabili. Abbiamo scelto Valle Sacchetta e Sacchettina s.a.s. come partner per condividere questo impegno concreto. L'azienda agricola, situata nella laguna veneziana, pone la sostenibilità al centro di ogni attività, sperimentando soluzioni naturali per ridurre l'impatto ambientale. Tra queste, la coltivazione di microalghe, organismi fotosintetici capaci di assorbire CO₂ e rilasciare ossigeno in quantità superiori a quella degli alberi. Un progetto che unisce innovazione e natura, trasformando la responsabilità ambientale in un'azione tangibile per il futuro.

Since 2022, the Carbon Neutrality certification has confirmed a strategy based on investments in carbon offsets and more sustainable production practices. We have partnered with Valle Sacchetta e Sacchettina s.a.s. to strengthen this commitment to environmental responsibility. This agricultural company, situated in the Venetian lagoon, prioritises sustainability in all its operations, actively seeking natural solutions to minimise its environmental footprint. One innovative approach they employ is the cultivation of microalgae—photosynthetic organisms that absorb CO₂ and release oxygen more efficiently than trees. This project beautifully blends innovation and nature, turning our environmental responsibility into concrete actions for a better future.

DESIGNERS

CIMENTO SURFACES



“Fin dall’inizio, collaborare con Cimento ha significato diventare parte di un’azienda con una visione innovativa per la ricerca e la sperimentazione di nuovi linguaggi attraverso l’uso dei materiali cementizi come il loro emblematico Cimento, applicabile alle superfici e ai prodotti. Ma introducendo anche nuove tecniche, come l’applicazione a spruzzo e stampi, che danno una maggiore tridimensionalità e materialità ai progetti. Insieme, abbiamo già esplorato materiali inerti come vetro, quarzo e sughero, e continueremo a percorrere questa strada, allargando la nostra ricerca anche nell’uso di materiali rigenerati. Questo incarico di direttore creativo rappresenta una nuova tappa nel nostro percorso condiviso e siamo molto contenti di iniziare questo viaggio.”

“From the beginning, collaborating with Cimento meant becoming part of a company with an innovative vision for the research and experimentation of new languages through the use of cementitious materials such as their emblematic Cimento, applicable to surfaces and products. But also introducing new techniques, such as spray and mold application, which give greater three-dimensionality and materiality to the projects. Together, we have already explored inert materials such as glass, quartz and cork, and we will continue to follow this path, broadening our research also in the use of regenerated materials. This role as creative director represents a new stage in our shared journey and we are very happy to begin this journey.”

Patricia Urquiola
CREATIVE DIRECTOR

DESIGNERS CIMENTO®

Elisa Ossino



Elisa Ossino è architetto e designer. Siciliana, si è formata a Milano, dove ha studiato al Politecnico. Nel 2006 fonda Elisa Ossino Studio, struttura con cui si occupa di interiors residenziali e retail, product design, art direction e set design. Il suo lavoro combina astrazione geometrica, monocromie, riferimenti metafisici e surrealisti, dando vita a una relazione coerente e allusiva tra lo spazio, individuato dal tratto forte del suo segno, la luce e gli oggetti. A ispirare lo stile compositivo di Elisa è una cifra di sospensione, ricorrente nella leggerezza progettuale di ogni intervento. Nell'attività di design privilegia linee e geometrie essenziali che si traducono nello spazio in segni capaci di conferire un marcato senso scenografico.

I suoi lavori sono stati pubblicati in Italia e all'estero ed esposti in prestigiose location e gallerie. Nel 2016, alcuni suoi progetti di design sono stati esposti in occasione della mostra "W-Women in Italian Design" per la nona edizione del Triennale Design Museum. Negli anni ha ricevuto svariati premi sia nazionali che Internazionali tra cui l'EDIDA 2020 - Elle Deco International Awards - con il progetto Balnea per Salvatori nella categoria Bagni; dal 2019 è stata inserita tra i "Top 100 Interior Designers of the Year" da AD. Il popup store progettato per Hermes ha vinto il 'Prix Versailles' 2021. Nel 2021 è stata nominata 'Designer dell'Anno' da Elle Decor Japan. Il progetto Erei Zone per De Padova ha vinto l'Archiproducts Design Award 2023 insieme ai progetti Spaghetti per Salvatori e iChing per Tubes, nominati anche per il 'Compasso d'Oro' 2024. Il tappeto Nostalgia disegnato per Amini è stato nominato 'Best in Floor Covering' da Elle Decor Japan nel 2023.

Prodotti *Products*

CANTON QUERINI TONDO

Elisa Ossino is an architect and designer. Sicilian, she trained in Milan, where she studied at Politecnico di Milano. In 2006, she founded Elisa Ossino Studio, focusing on residential and retail interiors, product design, art direction and set design. Her work combines geometric abstraction, monochromes, metaphysical and surrealist references, creating a coherent and allusive relationship between light, objects and space, identified by the strong feature of her sign. To inspire Elisa's compositional style is a figure of scenic suspension, recurring in the weightless design of each intervention. Essential lines and geometries are the distinctive features of her designs, giving to the space they are located in a deep scenographic feeling.

Her works have been published in Italy and abroad and exhibited in prestigious locations and galleries. In 2016, some of her design projects were exhibited at "W-Women in Italian Design" for the 9th edition of the Triennale Design Museum. Over the years she has received several national and international awards including the 'EDIDA' 2020 - Elle Deco International Awards - with Balnea designed for Salvatori winning 'Best bathroom'; since 2019 she was included among the 'Top 100 Interior Designers of the year' by AD. The popup store designed for Hermes won the 'Prix Versailles' 2021. She was nominated Designer of the Year in 2021 from Elle Decor Japan. The project Erei Zone for De Padova won the 'Archiproducts Design Award' 2023 along with the projects Spaghetti for Salvatori and iChing for Tubes, also nominated for the 'Compasso d'Oro' 2024. The Nostalgia carpet designed for Amini was nominated 'Best in Floor Covering' from Elle Decor Japan in 2023.

Patricia Urquiola



Prodotti *Products*

BOTON CALLE FONDO GRIGLIA RIGÀ
RIVA SALSO

Patricia Urquiola studia architettura alla Universidad Politécnica de Madrid e al Politecnico di Milano dove si laurea con Achille Castiglioni. Lavora con Vico Magistretti e in seguito come head of design dello studio Lissoni Associati. Nel 2001 apre il suo studio a Milano, specializzato in design industriale, architettura, direzione artistica e consulenza strategica. Art director di Cassina dal 2015, Patricia Urquiola collabora con importanti brand italiani e internazionali, tra cui Haworth, Louis Vuitton, B&B Italia, Moroso, Flos, Kvadrat, BMW, Starbucks e Ferrari. Alcuni dei suoi prodotti sono esposti nei più importanti musei di arte e design al mondo, come il MOMA di New York, il Musée des Arts Décoratifs di Parigi, il Museo della Triennale di Milano, il Vitra Design Museum di Basilea, il Victoria & Albert Museum di Londra, lo Stedelijk Museum of modern and contemporary art di Amsterdam e il Philadelphia Art Museum.

È stata docente ospite in varie università del mondo, fa parte nell'Advisory Board del Politecnico di Milano e del Comitato Scientifico della Fondazione Triennale di Milano. È stata insignita della Medaglia d'Oro delle Belle Arti, conferitale dal Governo spagnolo.

Patricia Urquiola studied architecture and design at the Universidad Politécnica de Madrid and completed her studies at the Politecnico di Milano (Technical University of Milan) where graduated under the mentorship of Achille Castiglioni.

She worked with Vico Magistretti at De Padova and later as head of design at Lissoni and Partners.

In 2001 she founded her own studio in Milan, specialized in industrial product design, architecture, art direction and strategy consulting. As well as serving as creative director of Cassina since 2015, Urquiola collaborates with some of the world's most important brands including Haworth, Louis Vuitton, B&B Italia, Moroso, Flos, Kvadrat, BMW, Starbucks and Ferrari among others. Her work is exhibited in art and design museums across the world including the MOMA in New York, the Decorative Arts Museum in Paris, the Triennale Museum in Milan, the Vitra Design Museum in Basel, the Victoria & Albert Museum in London, the Stedelijk Museum of modern and contemporary art in Amsterdam and the Philadelphia Art Museum.

She has given lectures at universities across the world, is part of the Advisory Board of Politecnico di Milano and the Scientific Committee of the Foundation of La Triennale Museum in Milan. She was awarded the Gold Medal of Merit in the Fine Arts, conferred on her by the Spanish government.



BORN TO BE CONCRETE

Creative director
Patricia Urquiola

Photography
DMIND agency
Federica Cocciro x Elle Decor Italia
HDG group
Margherita Bonetti x Elle Decor Italia
Mattia Balsamini
Silvia Rivoltella
Truetopia

Graphic design
Cimento - Communication Dept.

Press office & media relations
The Link PR

CONTACTS

HEADQUARTER/SHOWROOM

Via J.F. Kennedy, 107/a - 30027
San Donà di Piave - VE - IT
Tel. +39 0421 65422

SHOWROOMS

IT

Via Borgogna, 7 - 20122
Milano - IT
showroom@cimento.tech
Tel. +39 02 82772692

info@cimento.tech



www.cimento.tech

Tutte le informazioni contenute in questa brochure sono soggette a cambiamenti. Tutti i diritti sono riservati. Nessuna parte di questa brochure può essere riprodotta senza il nostro permesso scritto.

All the information on this brochure are subject to changes. All rights reserved. Reproduction in whole or in part of the contents of this brochure is prohibited without our written consent.

Rev. 12feb2026

©CIMENTO®



